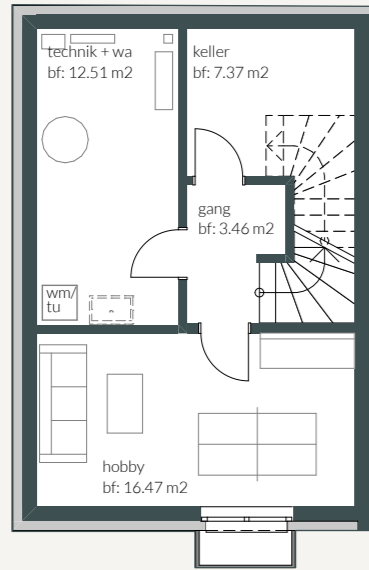
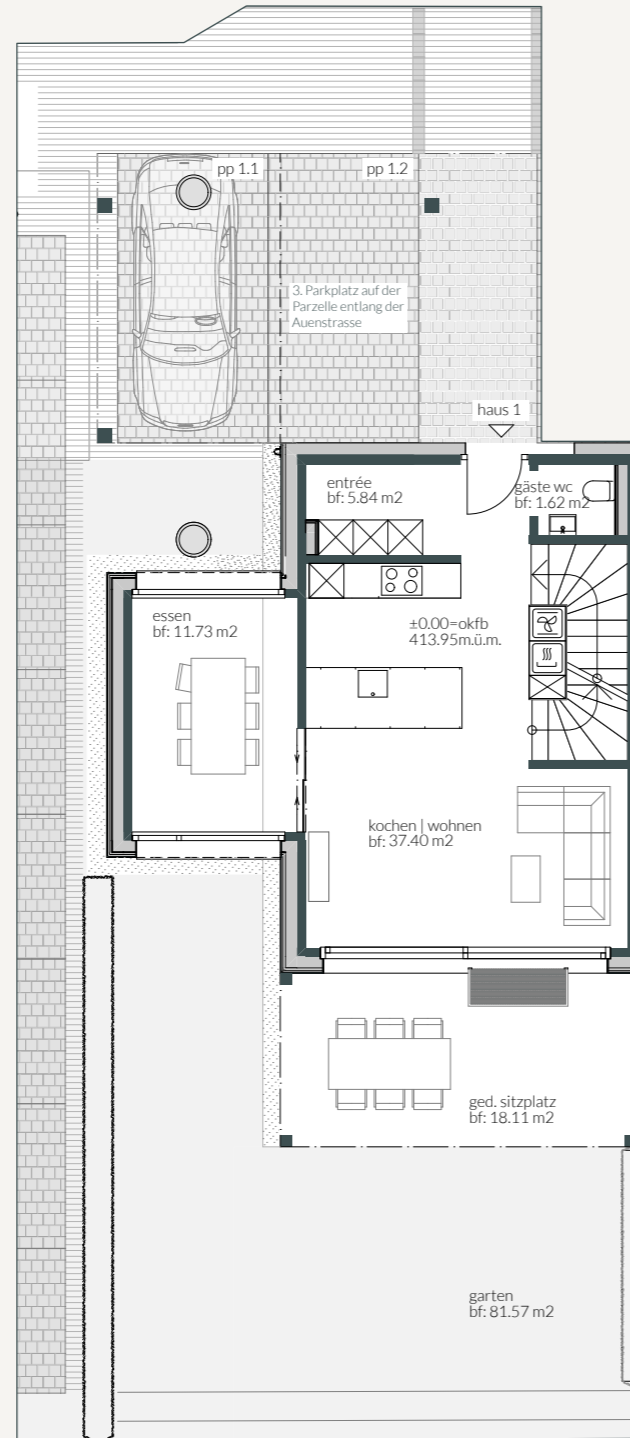


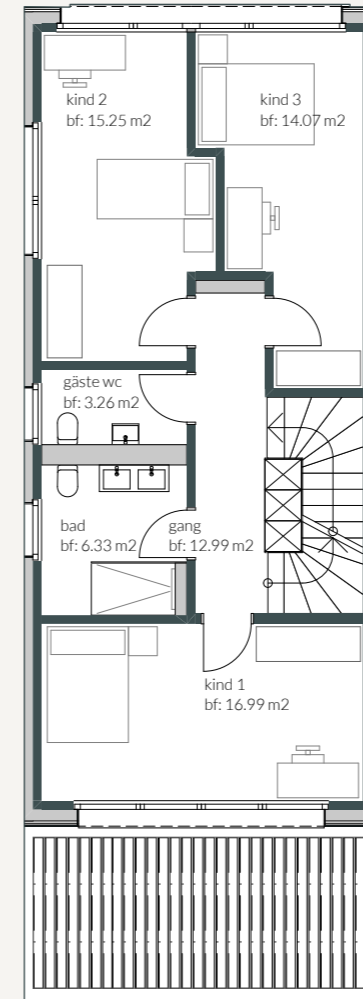
Untergeschoss



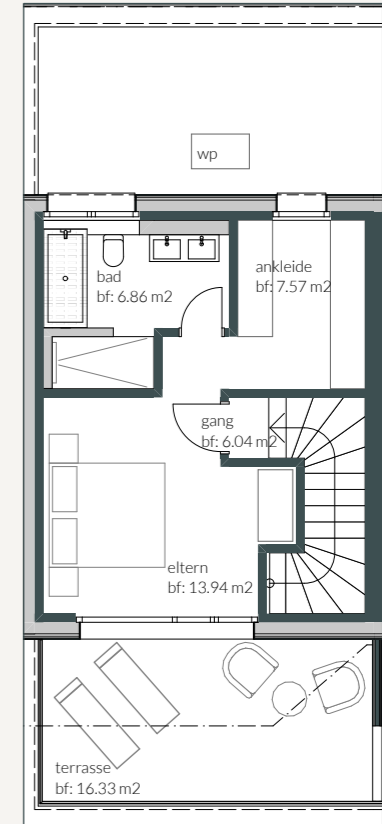
Erdgeschoss



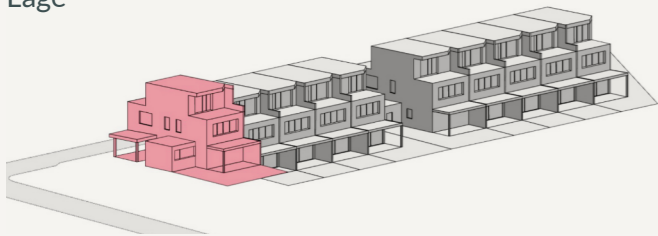
Obergeschoss



Attikageschoss



Lage



Beratung & Verkauf

AZ Immo AG
 Raphael Sidler
 +41 77 443 14 71
 sr@azimmobilien.ch
 9443 Widnau
 azimmobilien.ch

| | |
|----------------------------|-----------------------|
| Geschossfläche (BGF) | 215.49 m ² |
| Grundstücksfläche | 236.22 m ² |
| Nettowohnfläche | 180.32 m ² |
| Terrasse | 16.33 m ² |
| Sitzplatz | 18.11 m ² |
| Garten | 75.37 m ² |
| Parkplätze gedeckt / offen | 2 / 1 Stk. |