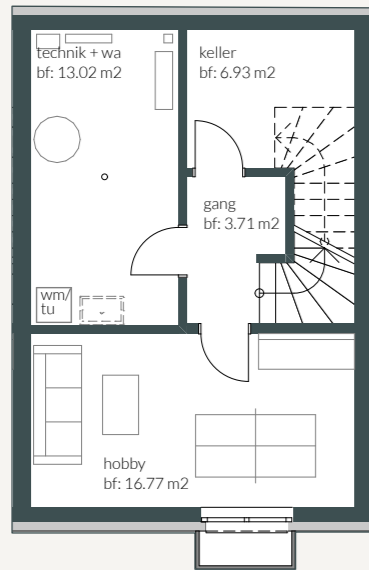
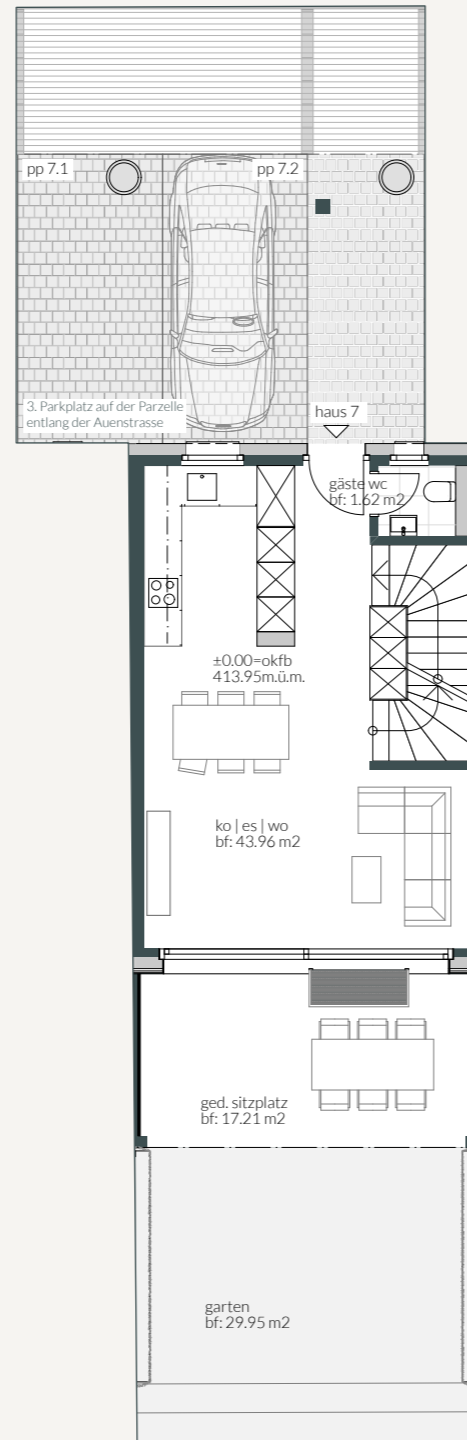


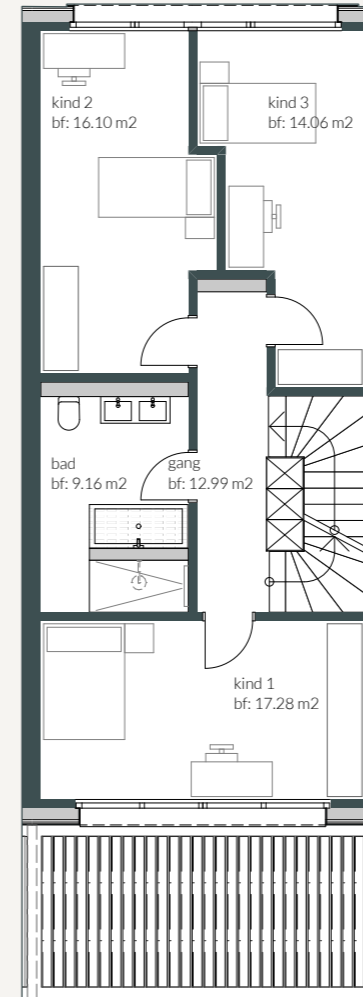
Untergeschoss



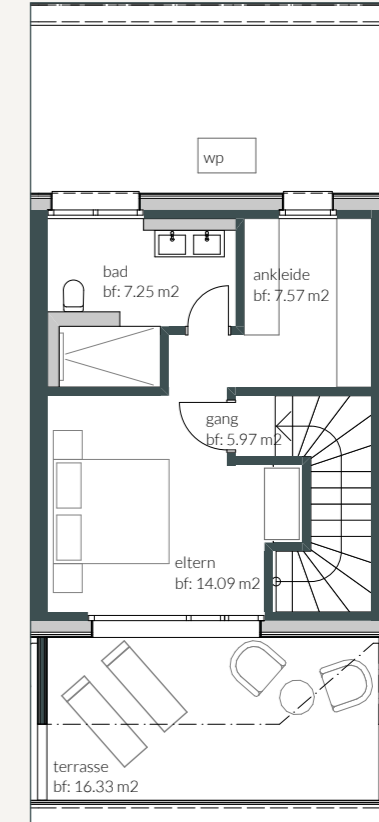
Erdgeschoss



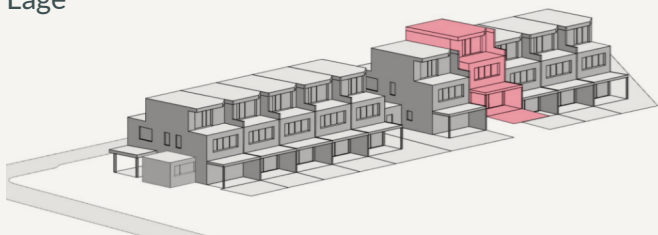
Obergeschoss



Attikageschoss



Lage



Beratung & Verkauf

AZ Immo AG
 Raphael Sidler
 +41 77 443 14 71
 sr@azimmobilien.ch
 9443 Widnau
 azimmobilien.ch

Geschossfläche (BGF)	205.32 m ²
Grundstücksfläche	145.94 m ²
Nettowoohnfläche	170.62 m ²
Terrasse	16.33 m ²
Sitzplatz	17.21 m ²
Garten	29.95 m ²
Parkplätze gedeckt / offen	2 / 1 Stk.

